





## Product Jewelry

NO. HWDRS003

### Detailed Account

Material.

18K

Weight.

12.0g( $\pm 1.0$ g)

Different weight of ring size

Size.

18(Inquiry)

Color.

Inner Ring(Yellow), Outer ring(White)

Color can be changed according to consumer's preference

Ston.

Diamond 0.3ct.

(Zirconia cubic is also available)







C<sup>t</sup>ring

“ DalRing that can be  
re adjustable swap design. ”

It means that, like a tree, two people meet and make the growth rings with their profound love.

All products are handicrafts based on the design of professional designers  
and are made with the highest quality of detail, including design  
completeness, abrasion, finishing and valuables.



## Product Jewelry

NO. HWDRS005

### Detailed Account

Material.

18K

Weight.

12.0g( $\pm 1.0$ g)

Different weight of ring size

Size.

18(Inquiry)

Color.

Inner Ring(Yellow), Outer ring(White)

Color can be changed according to consumer's preference





Cring







## Product Jewelry

NO. HWDRS006

### Detailed Account

Material.

18K

Weight.

12.0g( $\pm 1.0$ g)

Different weight of ring size

Size.

18(Inquiry)

Color.

Inner Ring(Yellow), Outer ring(White)

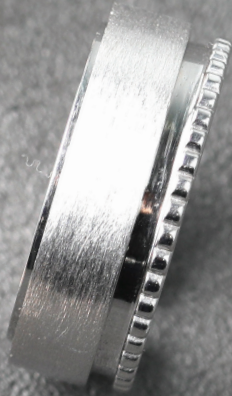
Color can be changed according to consumer's preference







This design is a symbol of the most beautiful woman in the world, pure and pure, with innocence and purity penetrating naturally.





## Product Jewelry

NO. HWDRS010

### Detailed Account

Material.

18K

Weight.

12.0g( $\pm 1.0$ g)

Different weight of ring size

Size.

18(Inquiry)

Color.

Inner Ring(Yellow), Outer ring(White)

Color can be changed according to consumer's preference

Ston.

Diamond

(Zirconia cubic is also available)





A simple design that expresses only the love of the two shows the figure of two  
lovers filling the world with deep love.





## Product Jewelry

NO. HWDRS007

### Detailed Account

Material.

18K

Weight.

12.0g( $\pm 1.0$ g)

Different weight of ring size

Size.

18(Inquiry)

Color.

Inner Ring(Yellow), Outer ring(White)

Color can be changed according to consumer's preference





This design expresses unchanging love over time,  
It is a gorgeous but simple modern ring. It is elegant in the formal place, and it is possible to  
produce various styles in simple style in everyday life.





## Product Jewelry

NO. HWDRS012

### Detailed Account

Material.

18K

Weight.

15.0g( $\pm 1.0$ g)

Different weight of ring size

Size.

18(Inquiry)

Color.

Inner Ring(Yellow), Outer ring(White)

Color can be changed according to consumer's preference





It is the point of this design that the impressionist light of the diamond expresses all the beautiful light which exists in the world impressively.

A line wrapped around a ring is a classic band that symbolizes the mysterious moments of the beautiful light and the halo, which change in various ways around the sunrise.





## Product Jewelry

NO. HWDRS011

### Detailed Account

Material.

18K

Weight.

15.0g( $\pm 1.0$ g)

Different weight of ring size

Size.

18(Inquiry)

Color.

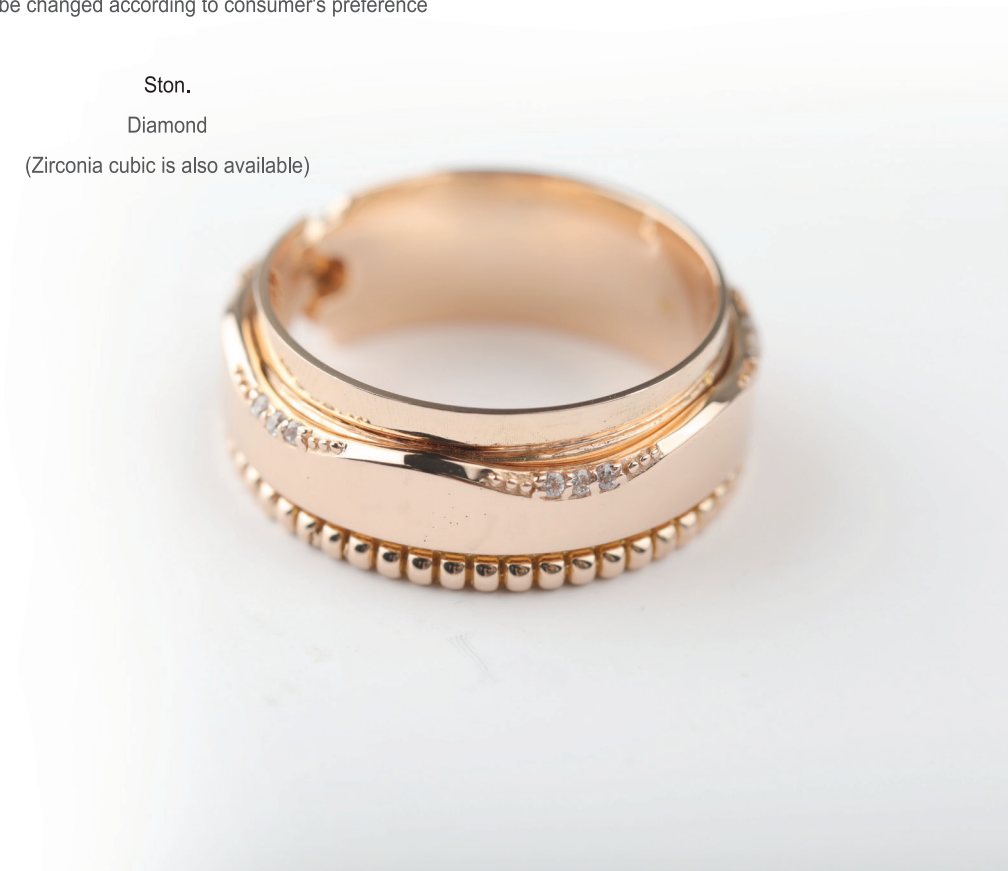
Inner Ring(Yellow), Outer ring(White)

Color can be changed according to consumer's preference

Ston.

Diamond

(Zirconia cubic is also available)





## Product Jewelry

NO. HWDRS008

### Detailed Account

Material.

18K

Weight.

12.0g( $\pm 1.0$ g)

Different weight of ring size

Size.

18(Inquiry)

Color.

Inner Ring(Yellow), Outer ring(White)

Color can be changed according to consumer's preference







## Product Jewelry

NO. HWDRS009

### Detailed Account

Material.

18K

Weight.

15.0g(±1.0g)

Different weight of ring size

Size.

18(Inquiry)

Color.

Inner Ring(Yellow), Outer ring(White)

Color can be changed according to consumer's preference





Designed with the motif of the mysterious aurora of the night sky, the metal line unfolds a fantastic and three-dimensional security, symbolizing new hope.





A rhythmic curved band like a river gently waving in  
the gentle breeze, and a metal line boldly revealing  
each other's hearts on it expresses the hearts of  
lovers who are deeply in love.

S2

